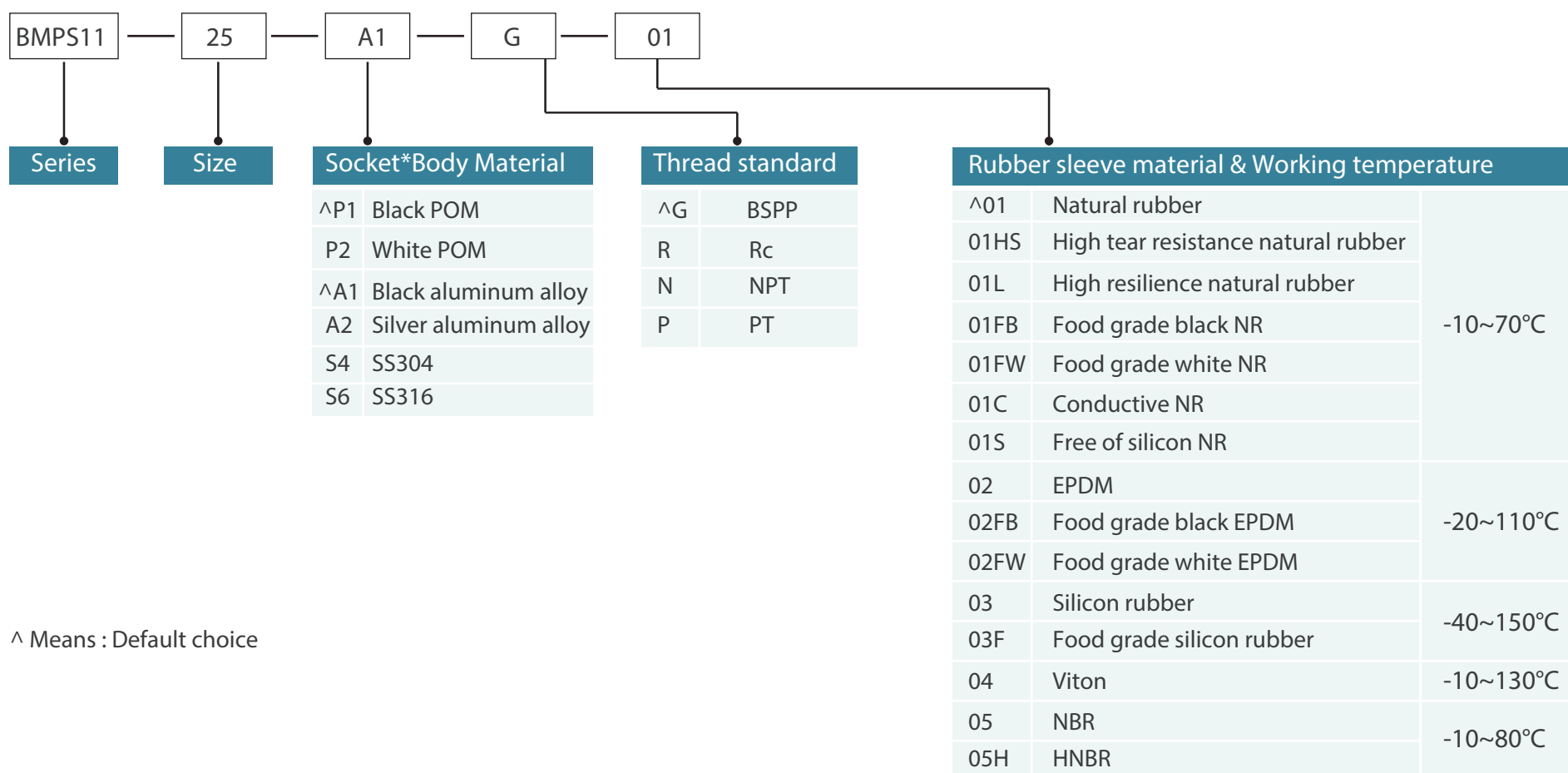


Codification:



^ Means : Default choice

Technical specification:

Features	
Design	Pneumatically actuated pinch valve
Sealing principle	Elastic lip seal
Mounting position	Any
Type of mounting	In-line installation
Direction of flow	Reversible
Valve function	2/2 way, normally open
Reset method	Rebound resilience
Nominal pressure	PN10
Sleeve feature	Replaceable

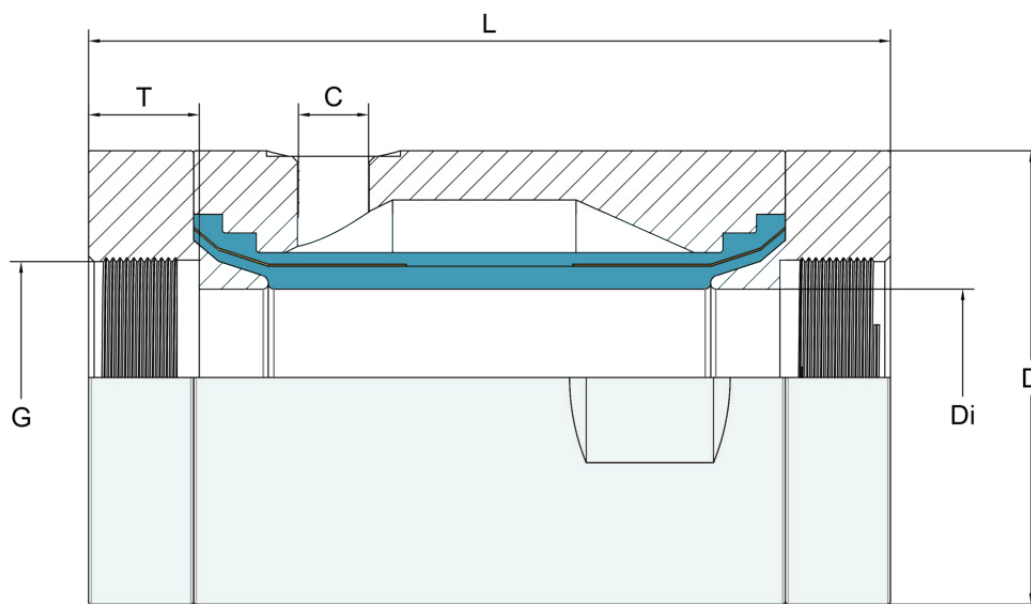
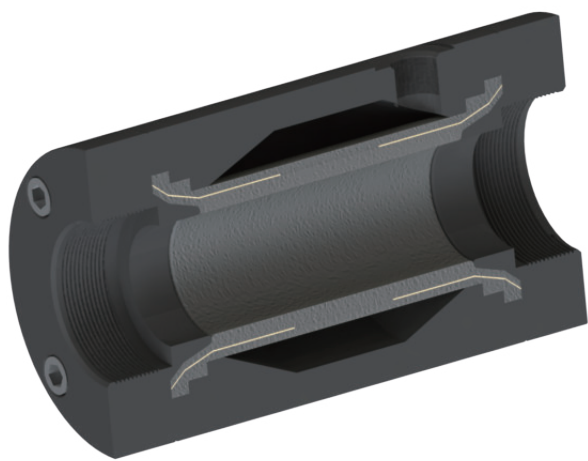


Technical data	
Housing	POM, aluminum alloy, stainless steel
Socket	POM, aluminum alloy, stainless steel
Seal or sleeve	Natural rubber, EPDM, NBR, HNBR, VITON.....
Bolts	Stainless steel 304
Control pressure [bar]	Less than 8 bar
Operating pressure [bar]	0.....6
Pressure difference [bar]	2.....3
Optimum control pressure	Medium pressure+Pressure difference

Advantage		
* Compact design	* Free passage	* No plugging
* 100% shut off	* Easy maintenance	* Anti-abrasive
* Food grade	* Anti-corrosive	* Quick open-close

Application
For Pneumatic convey industry
* Powder industry: granual, epoxy painting, glass, plastic
* Chemical industry: acid, fuel, liquid, fertilizer
* Food industry: syrup, ice cream, milk, liquid food
* Others: cable, dust, salt, water, slurry, waste, sludge



DN (mm)	Di (mm)	G (Inch)	L (mm)	D (mm)	T (mm)	C	Vol.l
10	10	3/8"	84	48	12	G 1/8"	0.04
15	15	1/2"	98	52	14	G 1/8"	0.05
20	20	3/4"	115	62	17	G 1/8"	0.07
25	25	1"	130	67	17	G 1/4"	0.08
32	32	1 1/4"	140	82	18	G 1/4"	0.15
40	40	1 1/2"	164	92	19	G 1/4"	0.25
50	50	2"	187	114	24	G 1/4"	0.36
65	65	2 1/2"	208	137	25	G 1/4"	0.49
80	80	3"	244	168	25	G 1/4"	0.72