

Series CIM

Material:

Body: Carbon steel, Cast iron, Aluminum alloy

Size: DN50-DN1000

Sleeve:

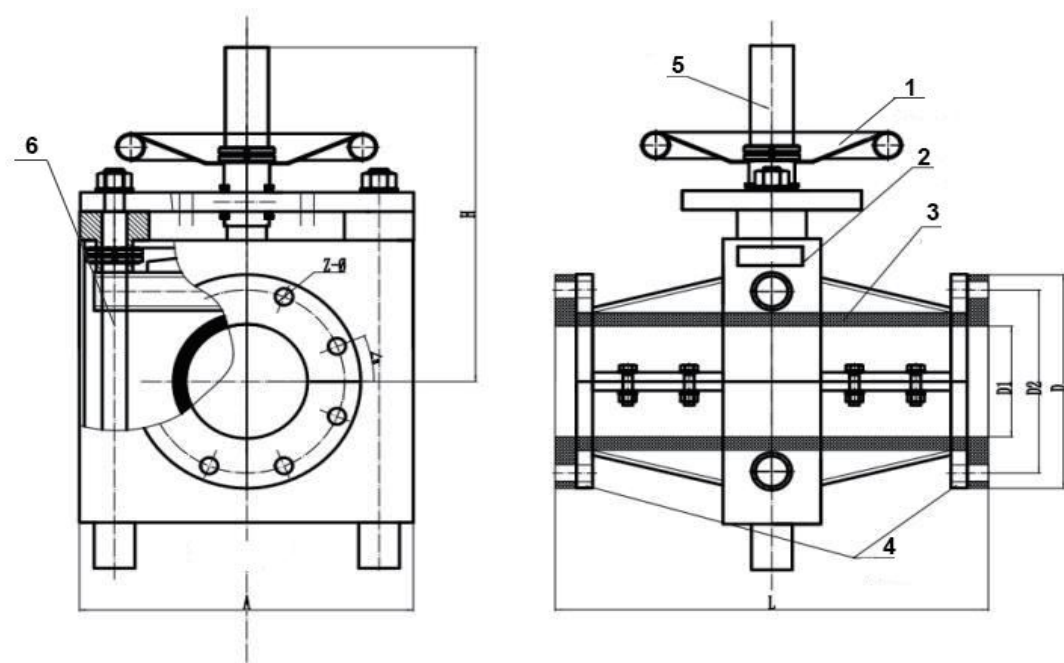
Material	Pressure	Temperature
Natural Rubber (LINATEX)	<1.0Mpa	<85 °C
EPDM	<1.0Mpa	<135 °C

Operator: Pneumatic, Electric, Manual

Flange: ASME B16.5, DIN PN10

Sleeve Performance:

Chemical and corrosion prevention, vibration and noise reduction, anti-wear, anticorrosion and no jammed.



Item	Parts	Material
1	Handwheel	Carbon steel
2	Body	Cast iron
3	Sleeve	NR
4	Flange	Cast iron
5	Stem	AISI 410
6	Spindle	AISI 410

(mm)

Size	DN	L	A	D	D2	D1	Z-Ø	H
1 1/2"	40	140	160	150	110	38	4-18	147
2"	50	195	160	165	125	50	4-18	162
2 1/2"	65	230	195	185	145	65	4-18	185
3"	80	285	220	200	160	80	8-18	237
4"	100	360	240	220	180	96	8-18	265
5"	125	440	330	250	210	120	8-18	293
6"	150	500	435	285	240	145	8-22	447
8"	200	560	510	340	295	195	12-22	475
10"	250	630	610	405	355	245	12-26	544
12"	300	730	700	460	410	295	12-26	595
14"	350	890	820	520	470	345	16-26	700
16"	400	1090	890	580	525	395	16-30	760

Note:

*Industrial pinch valve, handwheel pinch valve, electric pinch valve, motorized pinch valve, pneumatic cylinder operated pinch valve

*Size > DN400, please contact with BOC